

ASTRAL MINING



TSX.V:AA, AA.WT
Pink Sheets: AAMJF
Frankfurt: A7DA

Discovering Precious Metals in the Americas

Astral Mining Corporation (AA.V) is a junior exploration company focused on identifying high potential gold and silver deposits in politically stable, mining friendly districts of North America. Astral has also recently acquired a large, mineral-rich property in Mexico.

Astral continually seeks exploration projects that are in close proximity to the infrastructure needs of a successful mining project, thereby removing risks and enhancing the potential for an economic discovery during the current strong commodity cycle.

COMPANY HIGHLIGHTS



- NEW Gold Silver discovery in Mexico
- High grade Gold discovery in BC
- Currently drilling in MEXICO
- Experienced Management Team
- Excellent Growth Potential
- Insiders own approximately 20%
- Attractive Share Structure with low market cap



MEXICO: LOS CRESTONES PROJECT

- 4,168 hectares located in the prolific **Sierra Madre gold-silver belt**
- Strategic location with limited modern exploration & has never been drilled
- Numerous mineralized showings including visually striking silica vein "ribs"
- **Currently Drilling** 2500m in 16 holes



- Astral has the option to own 100%
- Surface work including grab sampling, hand trenching & mapping in progress to refine further drill targets
- Astral rock sampling returned values ranging up to 26.9 g/t gold & 649g/t silver from outcrops
- Numerous Gold and Silver soil anomalies discovered
- First ever drill program has **Started!**

SHARE STRUCTURE

(as of July 31, 2011)

Shares Issued: 21,685,400
Warrants: 17,284,149
Options: 1,290,695
Fully Diluted: 40,260,244

ASTRAL MINING CORPORATION

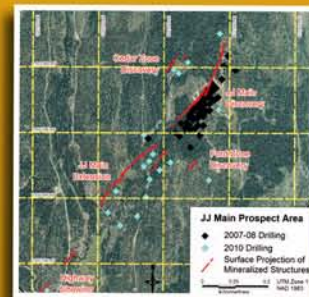
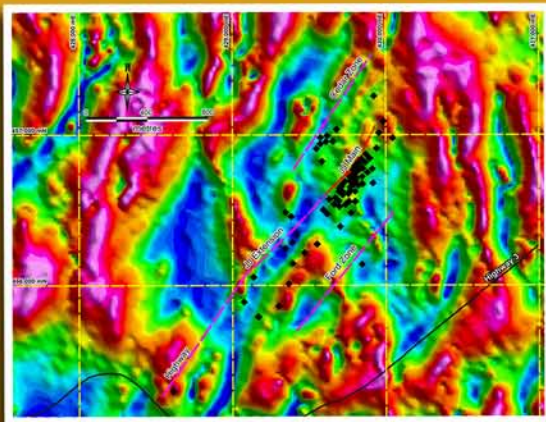
Old Stock Exchange Building
Suite 818 - 475 Howe St.
Vancouver, BC, Canada V6C-2B3
Tel: +1(604) 569-0800
info@astralmining.com
www.astralmining.com



CANADA, BC: JUMPING JOSEPHINE

- A NEW Astral Gold discovery in BC!
- 60% earned in by Astral / JV being finalized
- Grass roots prospecting discovery
- Nearly 400km² in contiguous land holdings
- Exploration suggests fertile intrusive stock beneath quartz stockwork mineralization
- Numerous untested showings throughout the property

A flagship gold property, covering 40,000ha in a proven gold district, new 43-101 compliant gold resource of 34,000oz indicated & 30,000oz inferred, open at depth at JJ Main prospect



DRILL HIGHLIGHTS:

07JD001 10m @ 9.95 g/t Au
07JD007 3m @ 10.41 g/t Au
07JD012 8m @ 3.06 g/t Au
07JD013 19m @ 7.01 g/t Au
07JD034 5m @ 7.74 g/t Au
07JD043 3m @ 13.83 g/t Au
07JD046 6m @ 8.28 g/t Au
07JD048 8m @ 12.44 g/t Au
07JD051 5m @ 7.96 g/t Au
08JD070 7.5m @ 10.05 g/t Au
08JD072 4m @ 13.23 g/t Au
08JD074 8m @ 8.31 g/t Au
08JD078 9m @ 3.94 g/t Au
08JD082 3.5m @ 11.24 g/t Au
08JD086 15m @ 1.24 g/t Au
08JD092 4m @ 21.0 g/t Au
08JD096 6m @ 8.73 g/t Au

CANADA, BC: HONEYMOON & BARRIERE RIDGE

- Grass roots property located near past-producing mines, situated 20km south of Yellowhead Mining's Harper Creek Copper Project
- Honeymoon prospective for VMS base metals, intrusive related gold-silver and strata bound copper mineralization
- Small drill program by Teck in 1999 returned 1m grading 9.57g/t gold & 128.4g/t silver & trenching assayed 2m averaging 9.26g/t gold on Honeymoon
 - Gov't Minfile occurrence on Barriere Ridge's "Silver Minnow" averaged 926g/t silver over 0.61m
- 2011 surface exploration underway on both properties to define drill targets